

# Connecting to the C8000

---

## ABSTRACT

The C8000 is an advanced programmable battery testing system. The C8000 offers four independent channels, tests batteries ranging from 50 mAh to 100 Ah, provides manual and automated service and can work in standalone or with PC software. The C8000 can be set up to communicate with a PC via the TCP/IP connection. This application note describes the steps necessary to connect the C8000 to the BatteryLab program.

---

## Contents

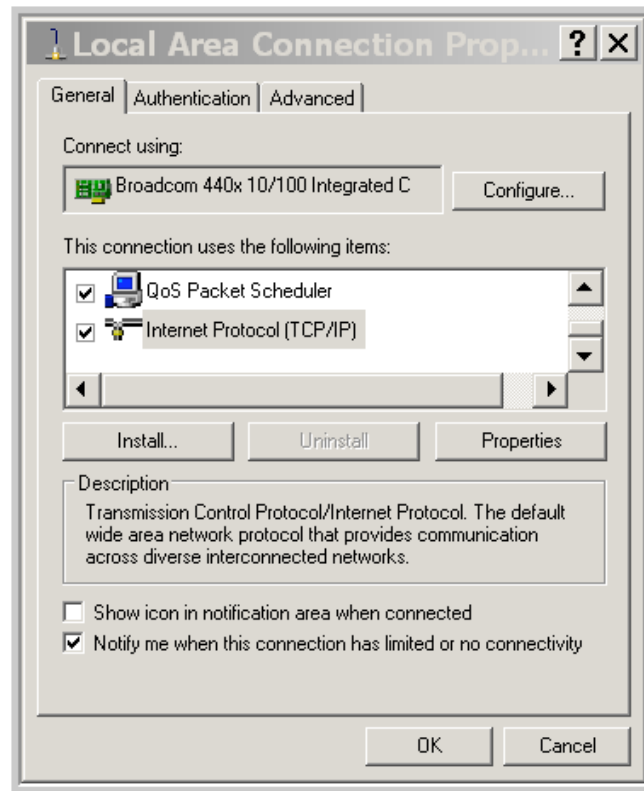
Step 1 – configure your laptop IP address .....	2
Step 2 – Configure the C8000.....	4
Step 3 – Configure BatteryLab .....	5
Step 4 – Connect to the C8000.....	5

## List of Figures

Figure 1 - LAN Properties Window .....	2
Figure 2 - TCP/IP Properties.....	3
Figure 3 - C8000 TCP/IP Settings.....	4
Figure 4 - BatteryLab Configuration Screen .....	5

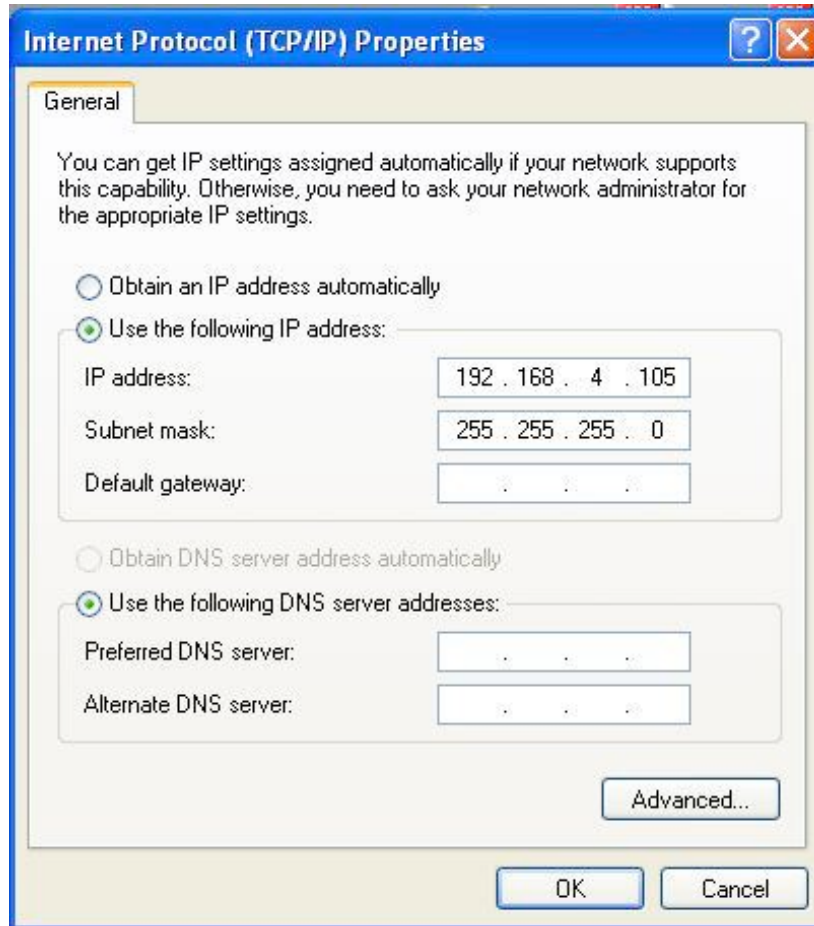
### Step 1 – configure your laptop IP address

- Select “Network Connections” from the Settings menu.
- Right-click on the “Local Area Connection” item and select “Properties”
- Scroll down to the bottom of the window and select “Internet Protocol (TCP/IP) Properties”. See Figure 1 - LAN Properties Window.



**Figure 1 - LAN Properties Window**

- Click on the “Properties” button shown in Figure 1 - LAN Properties Window and the following screen will be displayed.

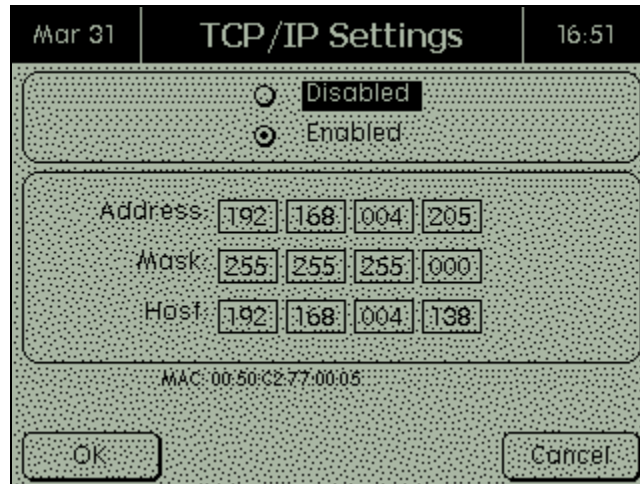


**Figure 2 - TCP/IP Properties**

- Configure the IP address as shown in Figure 2 - TCP/IP Properties

## Step 2 – Configure the C8000

- From the main menu select “System”
- From the ”System” menu select “TCP/IP Settings”

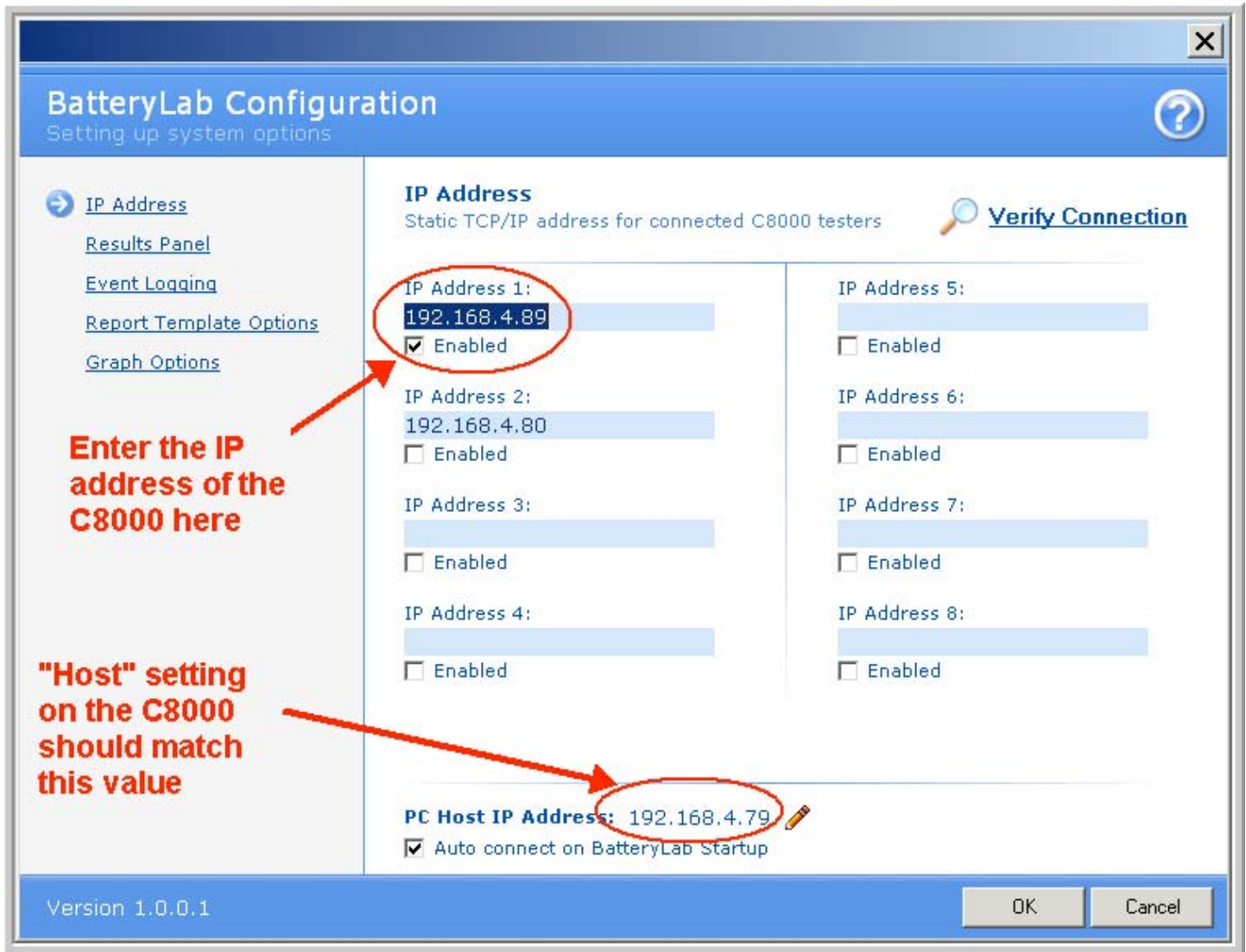


**Figure 3 - C8000 TCP/IP Settings**

- The “Address” entry is the TCP/IP address of the C8000
- The “Host” entry is the TCP/IP address of the laptop.
- Edit the host entry to match the TCP/IP address of the laptop.
- Restart the C8000

**Step 3 – Configure BatteryLab**

- Start the BatteryLab program
- Select “BatteryLab Configuration” from the right-hand menu
- Enter the IP address of the C8000 in the “IP Address 1” location. Refer to Figure 4 - BatteryLab Configuration Screen



**Figure 4 - BatteryLab Configuration Screen**

**Step 4 – Connect to the C8000**

- Select “Connect” from the right-hand menu in BatteryLab.
- Within a few seconds the BatteryLab program should show an icon with 4 battery stations indicating that the C8000 and BatteryLab have successfully connected.